

SERIES 1830 - HIGH INRUSH SINGLE POLE AND DOUBLE POLE

ROCKER SWITCHES UP TO 20 (4) A 250 V~

SINGLE POLE ST-SWITCHES

illuminated

20 (4) A 250 V~

10 (8) A 250 V~ 5E4

5/120 A 250 V~

T 85/55

16 A (1 HP) 250 V AC

Switches for 125 V AC on request



6.3 1830.3111



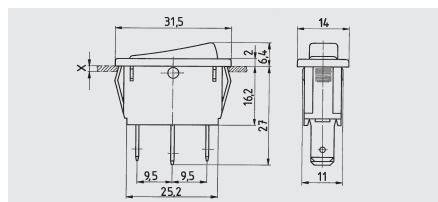
6.3 1830.3112*



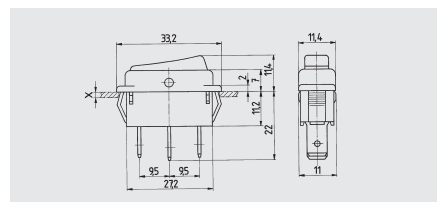
6.3 1830.3118*



6.3 1830.8112*



quick-connect terminal 6.3



quick-connect terminal 6.3

DOUBLE POLE ST-SWITCHES

illuminated

20 (4) A 250 V~

10 (8) A 250 V~ 5E4

5/120 A 250 V~

T 85/55

16 A (1 HP) 250 V AC

Switches for 125 V AC or 400 V AC on request



6.3 1835.3114



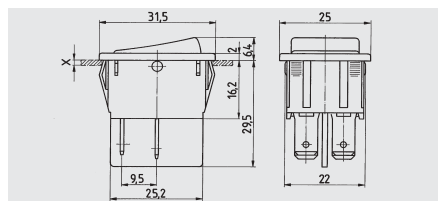
6.3 1835.3112*



6.3 1835.3111



6.3 1835.3118*



quick-connect terminal 6.3

SINGLE POLE ST-SWITCHES

20 (4) A 250 V~

10 (8) A 250 V~ 5E4

5/120 A 250 V~

T 105/55

16 A (1/3 HP) 125 V AC

16 A (1 HP) 250 V AC



6.3 1831.3312*



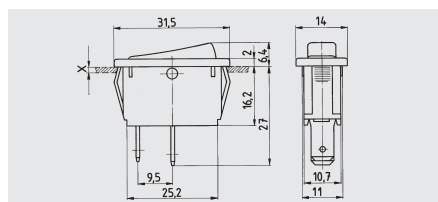
6.3 1831.3313*
1831.0115



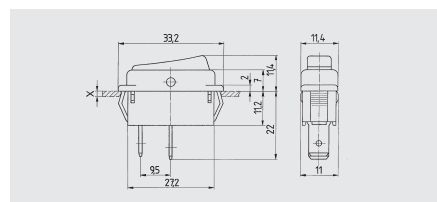
6.3 1831.3933*
1831.0114*



6.3 1831.8112*



quick-connect terminal 6.3



quick-connect terminal 6.3